

## Phonics

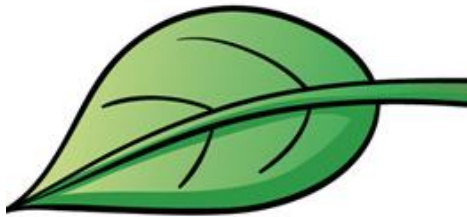
Circle the correct word.



lamb      lily



ladybug      lady



lean      leaf



lion      leg



list      lamp

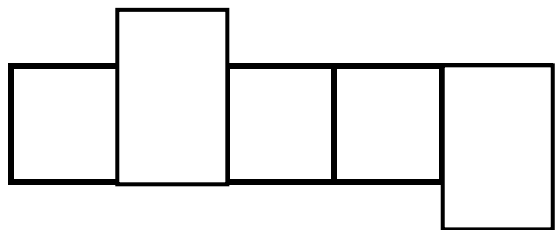
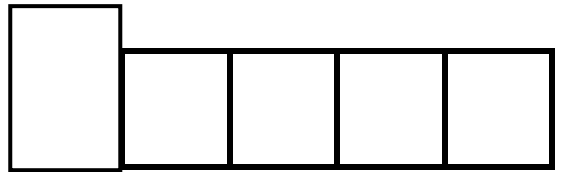
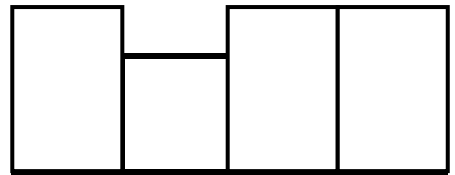
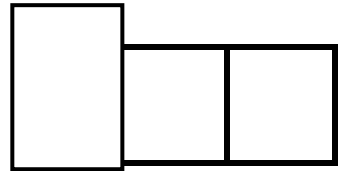
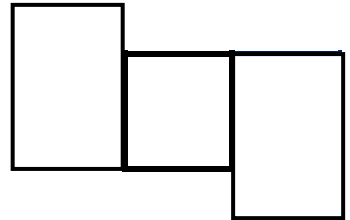


light      ladder

**Word Play**

Fill in the shapes with the words given in the box.

- sheep
- horse
- bull
- rabbit
- hen
- boy



## Sentence Structure

Choose the correct sentence.

1.

Lamb went to the horse.

Horse to went the lamb.

2.

"Horse, Horse, you be will my mother?"

"Horse, Horse, will you be my mother?"

3.

"Am I a horse," the said horse.

"I am a horse," said the horse.

4.

"I can't be your mother."

"Your mother be can't I."

## Reading Comprehension

Answer the questions based on the story.

1. Who is NOT in this story?

a. Rabbit

b. Cow

c. Hen

2. Where does this story take place?

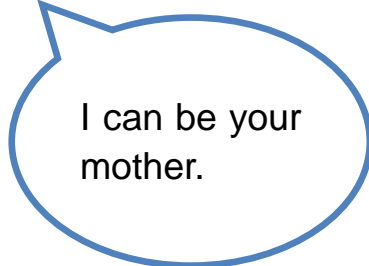
a. at a zoo

b. at a fair

c. on a farm

3. What do the animals say to the lamb?

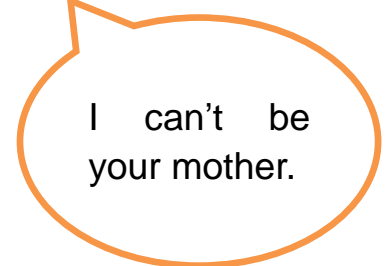
a.



b.



c.



4. Who will be the lamb's mother?

a. Mother

b. Boy

c. Girl

## Book Report

Name		Date			
Title					
Author		Illustrator			
Characters					
How was this story?					
Happy	Sad	Funny	Fun	Scary	Serious
Draw your favorite part of the story from the book.					